

A3732

Leader in Biomolecular Solutions for Life Science



# AMY2A Rabbit pAb

Catalog No.: A3732

## Basic Information

---

### Observed MW

57kDa

### Calculated MW

58kDa

### Category

Polyclonal Antibody

### Applications

WB

### Cross-Reactivity

Human,Mouse,Hamster

## Background

---

This gene encodes a member of the alpha-amylase family of proteins. Amylases are secreted proteins that hydrolyze 1,4-alpha-glucoside bonds in oligosaccharides and polysaccharides, catalyzing the first step in digestion of dietary starch and glycogen. This gene and several family members are present in a gene cluster on chromosome 1. This gene encodes an amylase isoenzyme produced by the pancreas.

## Recommended Dilutions

---

WB 1:500 - 1:1000

## Immunogen Information

---

### Gene ID

279

### Swiss Prot

P04746

### Immunogen

A synthetic peptide of human AMY2A

### Synonyms

PA; AMY2; AMY2A

## Contact

---

 [www.abclonal.com](http://www.abclonal.com)

## Product Information

---

### Source

Rabbit

### Isotype

IgG

### Purification

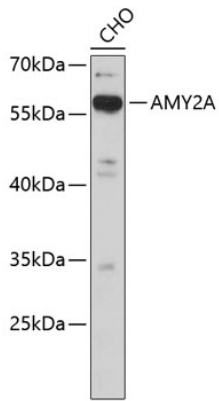
Affinity purification

### Storage

Store at 4°C. Avoid freeze / thaw cycles.  
Buffer: PBS with 0.02% sodium azide,pH7.3.

## Validation Data

---



Western blot analysis of extracts of CHO cells, using AMY2A antibody (A3732).  
Secondary antibody: HRP Goat Anti-Rabbit IgG (H+L) (AS014) at 1:10000 dilution.  
Lysates/proteins: 25µg per lane.  
Blocking buffer: 3% nonfat dry milk in TBST.