

AMPH antibody

Product Information

Catalog No.:	FNab00373
Size:	100µg
Form:	liquid
Purification:	Immunogen affinity purified
Purity:	≥95% as determined by SDS-PAGE
Host:	Rabbit
Clonality:	polyclonal
Clone ID:	None
IsoType:	IgG
Storage:	PBS with 0.02% sodium azide and 50% glycerol pH 7.3, -20°C for 12 months(Avoid repeated freeze / thaw cycles.)

Background

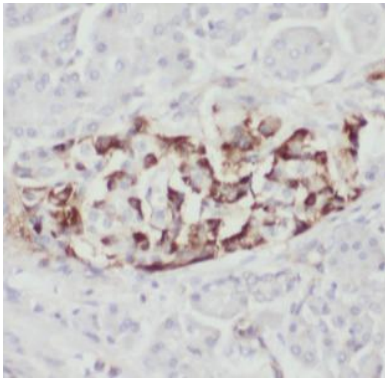
Amphiphysin(AMPH), a synaptic vesicle-associated protein that is highly concentrated in nerve terminal, is an autoantigen of Stiff-Man syndrome with breast cancer. Amphiphysin contains a N-terminal BAR(Bin1/Amphiphysin/Rv167) domain followed by an endocytosis domain, and a C-terminal SH3 domain. Amphiphysin has been proposed to function as a linker between the clathrin coat and dynamin in the endocytosis of synaptic vesicles. It may also participate in mechanisms of regulated exocytosis in synapses and certain endocrine cell types.

Immunogen information

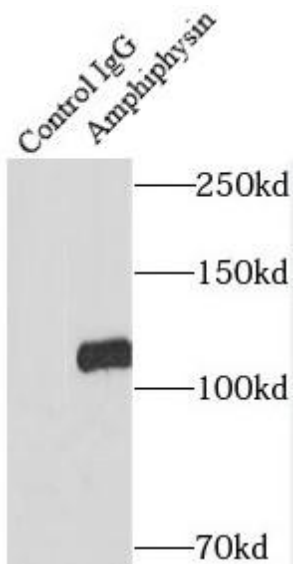
Immunogen:	amphiphysin
Synonyms:	Amphiphysin AMPH AMPH1
Observed MW:	120 kDa
Uniprot ID :	P49418

Application

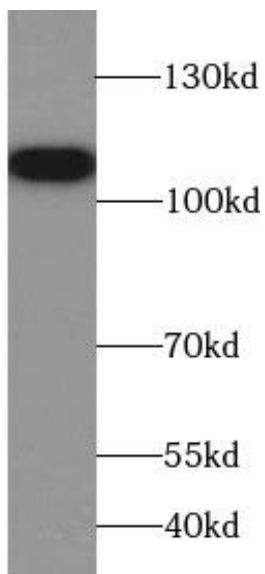
Reactivity:	Human, Mouse, Rat
Tested Application:	ELISA, WB, IHC, IP
Recommended dilution:	WB: 1:500-1:5000; IHC: 1:20-1:200; IP: 1:500-1:5000
Image:	



Immunohistochemistry of paraffin-embedded human pancreas cancer using FNab00373(AMPH antibody) at dilution of 1:100



IP Result of anti-Amphiphysin (IP:FNab00373, 4ug; Detection:FNab00373 1:1500) with mouse brain tissue lysate 4000ug.



mouse brain tissue were subjected to SDS PAGE followed by western blot with FNab00373(AMPH antibody) at dilution of 1:1000