

ADGRE1 antibody

Product Information

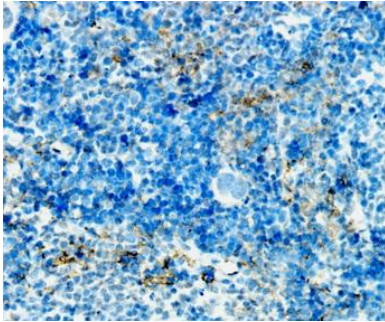
Catalog No.:	FNab02922
Size:	100µg
Form:	liquid
Purification:	Immunogen affinity purified
Purity:	≥95% as determined by SDS-PAGE
Host:	Rabbit
Clonality:	polyclonal
Clone ID:	None
IsoType:	IgG
Storage:	PBS with 0.02% sodium azide and 50% glycerol pH 7.3, -20°C for 12 months(Avoid repeated freeze / thaw cycles.)

Immunogen information

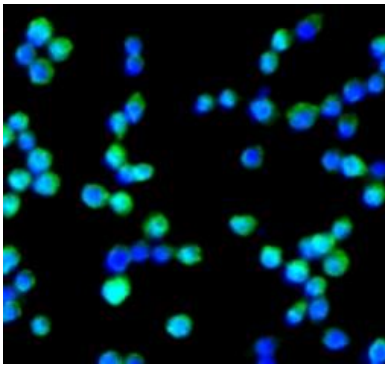
Immunogen:	EGF-like module containing, mucin-like, hormone receptor-like sequence 1
Synonyms:	Adhesion G protein-coupled receptor E1 EGF-like module receptor 1 EGF-like module-containing mucin-like hormone receptor-like 1 EMR1 hormone receptor ADGRE1 EMR1 TM7LN3 F4/80
Observed MW:	160 kDa
Uniprot ID :	Q14246

Application

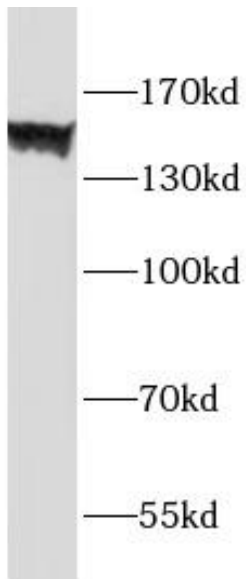
Reactivity:	Human, Mouse, Rat
Tested Application:	ELISA, WB, IHC, IF
Recommended dilution:	WB: 1:500-1:1000; IHC: 1:20-1:200; IF: 1:50-1:500
Image:	



Immunohistochemistry of paraffin-embedded mouse spleen tissue slide using FNab02922(F4/80 Antibody) at dilution of 1:200



Immunofluorescent analysis of (10% Formaldehyde) fixed Raw264.7 cells using FNab02922 (F4/80 antibody) at dilution of 1:50 and FITC-conjugated Goat Anti-Rabbit IgG(H+L)



HL-60 cells were subjected to SDS PAGE followed by western blot with FNab02922(F4/80 Antibody) at dilution of 1:1000