

A21234

Leader in Biomolecular Solutions for Life Science



# Integrin- $\beta$ 1/CD29 Rabbit mAb

Catalog No.: A21234 **Recombinant**

## Basic Information

### Observed MW

### Calculated MW

88kDa

### Category

SMab Recombinant Monoclonal Antibody

### Applications

IF/ICC,FC,ELISA

### Cross-Reactivity

Human,Mouse,Rat

### CloneNo number

ARC52468

## Background

Integrins are heterodimeric proteins made up of alpha and beta subunits. At least 18 alpha and 8 beta subunits have been described in mammals. Integrin family members are membrane receptors involved in cell adhesion and recognition in a variety of processes including embryogenesis, hemostasis, tissue repair, immune response and metastatic diffusion of tumor cells. This gene encodes a beta subunit. Multiple alternatively spliced transcript variants which encode different protein isoforms have been found for this gene.

## Recommended Dilutions

IF/ICC 1:50 - 1:200

FC 5  $\mu$ l per  $10^6$  cells in  
100  $\mu$ l volume

## Immunogen Information

### Gene ID

3688

### Swiss Prot

P05556

### Immunogen

Recombinant fusion protein containing a sequence corresponding to amino acids 1-728 of human Integrin- $\beta$ 1/CD29 (NP\_002202.2).

### Synonyms

CD29; FNRB; MDF2; VLAB; GPIIA; MSK12; VLA-BETA; Integrin- $\beta$ 1/CD29

## Contact

 [www.abclonal.com](http://www.abclonal.com)

## Product Information

### Source

Rabbit

### Isotype

IgG

### Purification

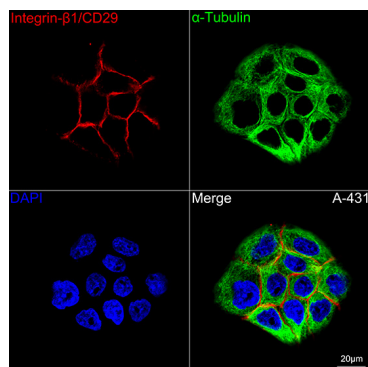
Affinity purification

### Storage

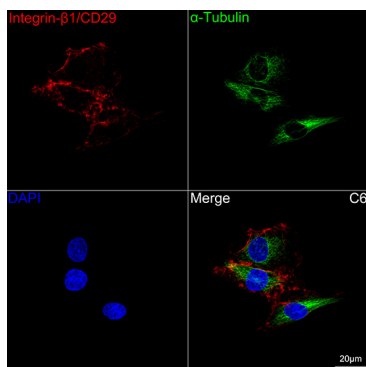
Store at -20°C. Avoid freeze / thaw cycles.

Buffer: PBS with 0.05% proclin300,0.05% BSA,50% glycerol,pH7.3.

## Validation Data



Confocal imaging of A-431 cells using Integrin- $\beta$ 1/CD29 Rabbit mAb (A21234, dilution 1:100) followed by a further incubation with Cy3 Goat Anti-Rabbit IgG (H+L) (AS007, dilution 1:500) (Red). The cells were counterstained with  $\alpha$ -Tubulin Mouse mAb (AC012, dilution 1:400) followed by incubation with ABflo® 488-conjugated Goat Anti-Mouse IgG (H+L) Ab (AS076, dilution 1:500) (Green). DAPI was used for nuclear staining (Blue). Objective: 100x.



Confocal imaging of C6 cells using Integrin- $\beta$ 1/CD29 Rabbit mAb (A21234, dilution 1:100) followed by a further incubation with Cy3 Goat Anti-Rabbit IgG (H+L) (AS007, dilution 1:500) (Red). The cells were counterstained with  $\alpha$ -Tubulin Mouse mAb (AC012, dilution 1:400) followed by incubation with ABflo® 488-conjugated Goat Anti-Mouse IgG (H+L) Ab (AS076, dilution 1:500) (Green). DAPI was used for nuclear staining (Blue). Objective: 100x.