

A21042

Leader in Biomolecular Solutions for Life Science



# SARS-CoV-2 Nucleoprotein Rabbit mAb

Catalog No.: A21042 **Recombinant** **1 Publications**

## Basic Information

### Observed MW

50kDa

### Calculated MW

46kDa

### Category

SMab Recombinant Monoclonal Antibody

### Applications

WB,IF/ICC,ELISA

### Cross-Reactivity

SARS-CoV-2

### CloneNo number

ARC51499

## Background

Severe acute respiratory syndrome coronavirus 2 (SARS-CoV-2) is an enveloped, positive-sense, single-stranded RNA virus that causes coronavirus disease 2019 (COVID-19). Virus particles include the RNA genetic material and structural proteins needed for invasion of host cells. Once inside the cell the infecting RNA is used to encode structural proteins that make up virus particles, nonstructural proteins that direct virus assembly, transcription, replication and host control and accessory proteins whose function has not been determined.~ The structural proteins of SARS-CoV-2 include the envelope protein (E), spike or surface glycoprotein (S), membrane protein (M) and the nucleocapsid protein (N). The nucleocapsid phosphoprotein is a structural protein that binds to, protects the viral RNA genome and is involved in packaging the RNA into virus particles. The N protein has been suggested as an antiviral drug target.

## Recommended Dilutions

**WB** 1:2000 - 1:10000

**IF/ICC** 1:100 - 1:500

## Immunogen Information

### Gene ID

43740575

### Swiss Prot

P0DTC9

### Immunogen

Recombinant fusion protein containing a sequence corresponding to amino acids 1-420 of coronavirus Nucleoprotein (P0DTC9).

### Synonyms

N; Nucleoprotein; NC; SARS-CoV-2 Nucleoprotein

## Contact



[www.abclonal.com](http://www.abclonal.com)

## Product Information

### Source

Rabbit

### Isotype

IgG

### Purification

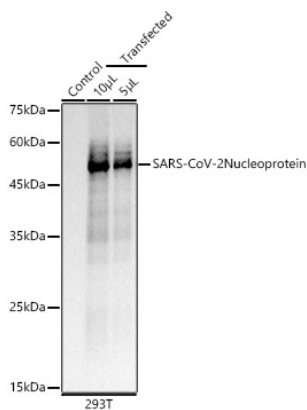
Affinity purification

### Storage

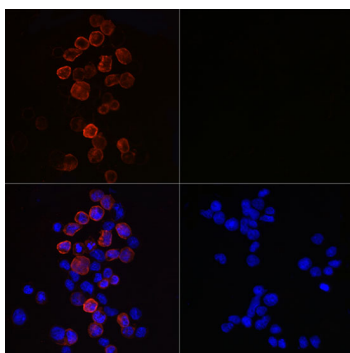
Store at -20°C. Avoid freeze / thaw cycles.

Buffer: PBS with 0.05% proclin300,0.05% BSA,50% glycerol,pH7.3.

## Validation Data



Western blot analysis of 293T, using SARS-CoV-2Nucleoprotein antibody (A21042) at 1:10000 dilution.  
Secondary antibody: HRP Goat Anti-Rabbit IgG (H+L) (AS014) at 1:10000 dilution.  
Lysates/proteins: 25µg per lane.  
Blocking buffer: 3% nonfat dry milk in TBST.  
Detection: ECL Basic Kit (RM00020).  
Exposure time: 0.2s.



Immunofluorescence analysis of 293T-N and 293T using SARS-CoV-2 Nucleoprotein Rabbit mAb (A21042) at dilution of 1:400 (40x lens). Blue: DAPI for nuclear staining.