

## Anti-Phospho-Akt-Ser473 antibody (410-490)

Cat # NB-22-0166

### GENERAL INFORMATION

**Product Type** Primary antibodies  
**Short Description** Rabbit polyclonal antibody anti-Phospho-RAC-alpha serine/threonine-protein kinase and RAC-beta serine/threonine-protein kinase and RAC-gamma serine/threonine-protein kinase-Ser473 (410-490) is suitable for use in Immunofluorescence, Immunocytochemist

**Applications** IF, ICC, WB, IHC-P, ELISA  
**Host/Source** Rabbit  
**Reactivity** Human, Mouse, Rat

### PRODUCT PROPERTIES

**Clonality** Polyclonal  
**Clone ID**  
**Concentration** 1 mg/mL  
**Conjugation** Unconjugated  
**Purification** The antibody was affinity-purified from rabbit anti-serum by affinity-chromatography.  
**Dilution Range** IF 1:50-200  
 WB 1:500-1:2000  
 IHC 1:100-1:300  
 ELISA 1:40000  
**Formulation** PBS, 50% Glycerol, 0.5% BSA and 0.02% Sodium Azide.  
**Isotype** IgG  
**Storage Instruction** Store at -20°C for up to 1 year from the date of receipt, and avoid repeat freeze-thaw cycles.

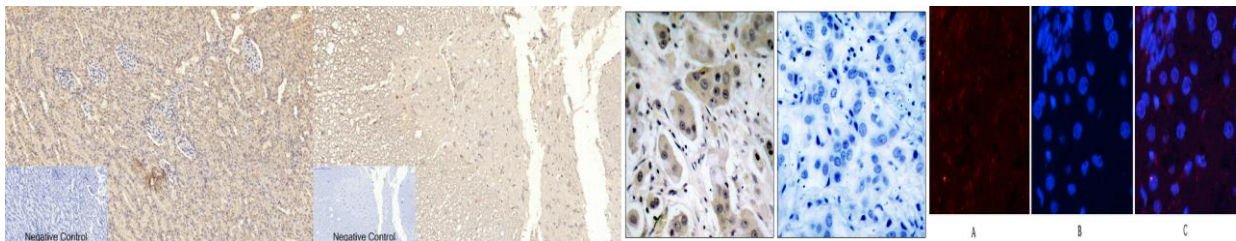
### TARGET INFORMATION

**Gene ID** [207](#)  
[208](#)  
[10000](#)  
[AKT1](#)  
[AKT2](#)  
[AKT1\\_HUMAN](#)  
[AKT2\\_HUMAN](#)  
[AKT3\\_HUMAN](#)  
[<](#)

**Immunogen** The antiserum was produced against synthesized peptide derived from human Akt around the phosphorylation site of Ser473 at amino acid range 431-480

**Immunogen Region** 410-490  
**Specificity** Phospho-Akt-Ser473 polyclonal antibody (RAC-alpha serine/threonine-protein kinase and RAC-beta serine/threonine-protein kinase and RAC-gamma serine/threonine-protein kinase) binds to endogenous RAC-alpha serine/threonine-protein kinase and RAC-beta s

**Immunogen Sequence**



Immunohistochemical analysis of paraffin-embedded Rat-kidney tissue. 1, Akt (phospho Ser473) Polyclonal Antibody was diluted at 1:200 (4°C, overnight). 2, Sodium citrate pH 6.0 was used for antibody retrieval (>98°C, 20min). 3, Secondary antibody was diluted at 1:200 (room temperature, 30min). Negative control was used by secondary antibody only.

Immunohistochemical analysis of paraffin-embedded Rat-spinal-cord tissue. 1, Akt (phospho Ser473) Polyclonal Antibody was diluted at 1:200 (4°C, overnight). 2, Sodium citrate pH 6.0 was used for antibody retrieval (>98°C, 20min). 3, Secondary antibody was diluted at 1:200 (room temperature, 30min). Negative control was used by secondary antibody only.

Immunohistochemistry analysis of paraffin-embedded human breast carcinoma, using Akt (Phospho-Ser473) Antibody. The picture on the right is blocked with the phospho peptide.

Immunofluorescence analysis of rat-liver tissue. 1, Akt (phospho Ser473) Polyclonal Antibody (red) was diluted at 1:200 (4°C, overnight). 2, Cy3 labeled Secondary antibody was diluted at 1:300 (room temperature, 50min). 3, Picture B: DAPI (blue) 10min. Picture A: Target. Picture B: DAPI. Picture C: merge of A+B

This product is suitable for in-vitro studies under the RESEARCH USE ONLY [RUO] licence. This product must not be used as for diagnostic or other medical purposes.