

A4825

Leader in Biomolecular Solutions for Life Science



## DNAJC15 Rabbit mAb

Catalog No.: A4825

Recombinant

### Basic Information

#### Observed MW

18kDa

#### Calculated MW

16kDa

#### Category

SMab Recombinant Monoclonal  
Antibody

#### Applications

WB,IF/ICC,ELISA

#### Cross-Reactivity

Human,Mouse,Rat

#### CloneNo number

ARC0249

### Background

Predicted to enable ATPase activator activity. Predicted to be involved in protein import into mitochondrial matrix. Predicted to act upstream of or within several processes, including cellular response to starvation; negative regulation of mitochondrial electron transport, NADH to ubiquinone; and negative regulation of protein-containing complex assembly. Predicted to be located in mitochondrial inner membrane. Predicted to be part of PAM complex, Tim23 associated import motor.

### Recommended Dilutions

WB 1:500 - 1:1000

IF/ICC 1:50 - 1:200

### Immunogen Information

#### Gene ID

29103

#### Swiss Prot

Q9Y5T4

#### Immunogen

A synthetic peptide corresponding to a sequence within amino acids 70-150 of human DNAJC15 (Q9Y5T4).

#### Synonyms

MCJ; HSD18; DNAJD1; DNAJC15

### Contact



[www.abclonal.com](http://www.abclonal.com)

### Product Information

#### Source

Rabbit

#### Isotype

IgG

#### Purification

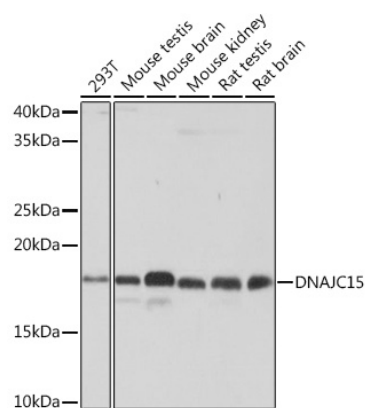
Affinity purification

#### Storage

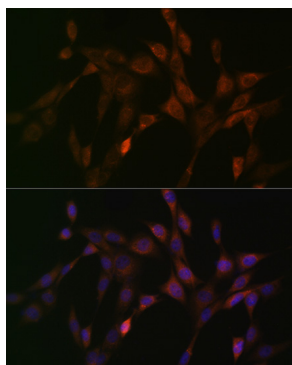
Store at -20°C. Avoid freeze / thaw cycles.

Buffer: PBS with 0.02% sodium azide,0.05% BSA,50% glycerol,pH7.3.

## Validation Data



Western blot analysis of extracts of various cell lines, using DNAJC15 Rabbit mAb (A4825) at 1:1000 dilution.  
Secondary antibody: HRP Goat Anti-Rabbit IgG (H+L) (AS014) at 1:10000 dilution.  
Lysates/proteins: 25µg per lane.  
Blocking buffer: 3% nonfat dry milk in TBST.  
Detection: ECL Basic Kit (RM00020).  
Exposure time: 10s.



Immunofluorescence analysis of NIH-3T3 cells using DNAJC15 Rabbit mAb (A4825) at dilution of 1:100 (40x lens). Blue: DAPI for nuclear staining.