

## LPP antibody

### Product Information

Catalog No.:	FNab04835
Size:	100µg
Form:	liquid
Purification:	Immunogen affinity purified
Purity:	≥95% as determined by SDS-PAGE
Host:	Rabbit
Clonality:	polyclonal
Clone ID:	None
IsoType:	IgG
Storage:	PBS with 0.02% sodium azide and 50% glycerol pH 7.3, -20°C for 12 months(Avoid repeated freeze / thaw cycles.)

### Background

May play a structural role at sites of cell adhesion in maintaining cell shape and motility. In addition to these structural functions, it may also be implicated in signaling events and activation of gene transcription. May be involved in signal transduction from cell adhesion sites to the nucleus allowing successful integration of signals arising from soluble factors and cell-cell adhesion sites. Also suggested to serve as a scaffold protein upon which distinct protein complexes are assembled in the cytoplasm and in the nucleus.

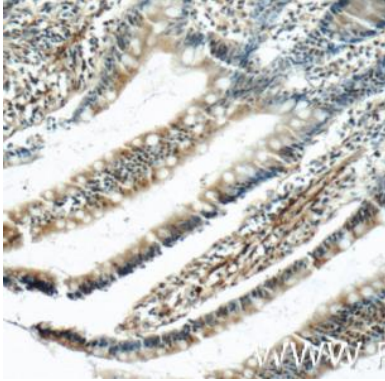
### Immunogen information

Immunogen:	LIM domain containing preferred translocation partner in lipoma
Synonyms:	Lipoma-preferred partner LIM domain-containing preferred translocation partner in lipoma LPP
Observed MW:	70-75 kDa
Uniprot ID :	Q93052

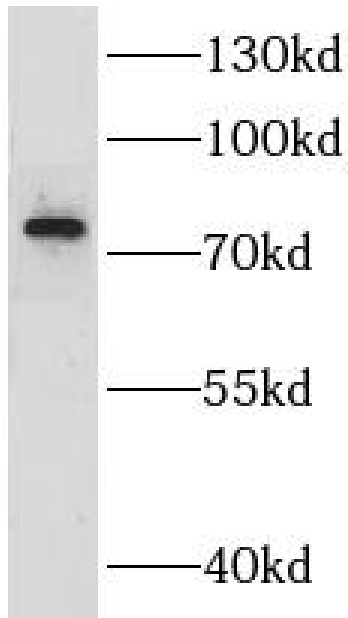
### Application

Reactivity:	Human, Mouse
Tested Application:	ELISA, WB, IHC, IF, FC
Recommended dilution:	WB: 1:500-1:2000; IHC: 1:20-1:200; IF: 1:20-1:200

Image:



Immunohistochemistry of paraffin-embedded human small intestine tissue slide using FNab04835(LPP Antibody) at dilution of 1:50



mouse colon tissue were subjected to SDS PAGE followed by western blot with FNab04835(LPP Antibody) at dilution of 1:2000