

A23748

Leader in Biomolecular Solutions for Life Science



PE Rabbit anti-Human CD146 mAb

Catalog No.: A23748

Basic Information

Observed MW

Calculated MW

57kDa/71kDa

Category

SMab Recombinant Monoclonal Antibody

Applications

FC

Cross-Reactivity

Human

CloneNo number

ARC56715-PE

Conjugate

PE. Ex:565nm. Em:574nm.

Recommended Dilutions

FC 5 μ l per 10^6 cells in
100 μ l volume

Contact

 www.abclonal.com

Background

Melanoma cell adhesion molecule (MCAM, MUC18, CD146) is an immunoglobulin superfamily member originally described as a cell surface adhesion protein and marker of the progression and metastasis of melanoma . Expression of MCAM protein is seen in vascular endothelial cells, activated T lymphocytes, smooth muscle, and bone marrow stromal cells. Research studies demonstrate increased MCAM expression in endothelial cells from angiogenesis-related disorders, including inflammatory bowel disease, Crohn' s disease, rheumatoid arthritis, tumors, and chronic renal failure . MCAM-expressing human mesenchymal stromal cells (hMSC) in the hematopoietic microenvironment are responsible for maintaining the self-renewal of hematopoietic stem and progenitor cells (HSPC) through direct contact between hMSC and HSPC. Related studies suggest that activation of the Notch signaling pathway may also, in part, play a role in HSPC maintenance . Additional research indicates that MCAM may play a role in multiple sclerosis, an autoimmune inflammatory disease that affects central nervous system neurons. Endothelial MCAM within the blood-brain barrier act as adhesion receptors that permit lymphocytes to transmigrate across the barrier and produce the inflammatory lesions that characterize the disorder .

Immunogen Information

Gene ID

4162

Swiss Prot

P43121

Immunogen

Recombinant fusion protein containing a sequence corresponding to amino acids 24-559 of human CD146 (NP_006491.2).

Synonyms

MCAM; CD146; MUC18; cell surface glycoprotein MUC18

Product Information

Source

Rabbit

Isotype

IgG

Purification

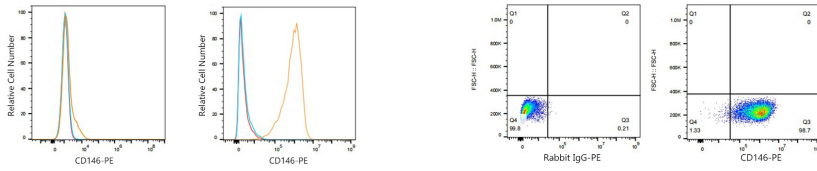
Affinity purification

Storage

Store at 2-8°C. Avoid freeze.

Buffer: PBS with 0.03% proclin300,0.2% BSA,pH7.3.

Validation Data



Flow cytometry: 1×10^6 MCF7 cells (negative control, left) and HUVEC (right) were surface-stained with PE Rabbit anti-Human CD146 mAb (A23748, 5 μ l/Test, orange line) or PE Rabbit IgG isotype control (5 μ l/Test, blue line). Non-fluorescently stained cells were used as blank control (red line).

Flow cytometry: 1×10^6 HUVEC cells were surface-stained with PE Rabbit IgG isotype control (5 μ l/Test, left) or PE Rabbit anti-Human CD146 mAb (A23748, 5 μ l/Test, right).