

## NFE2L2 antibody

### Product Information

Catalog No.:	FNab05855
Size:	100µg
Form:	liquid
Purification:	Immunogen affinity purified
Purity:	≥95% as determined by SDS-PAGE
Host:	Rabbit
Clonality:	polyclonal
Clone ID:	None
IsoType:	IgG
Storage:	PBS with 0.02% sodium azide and 50% glycerol pH 7.3, -20°C for 12 months(Avoid repeated freeze / thaw cycles.)

### Background

NRF2, also named as NFE2L2, belongs to the bZIP family and CNC subfamily. It is a transcription activator that binds to antioxidant response(ARE) elements in the promoter regions of target genes. NRF2 is important for the coordinated up-regulation of genes in response to oxidative stress. It may be involved in the transcriptional activation of genes of the beta-globin cluster by mediating enhancer activity of hypersensitive site 2 of the beta-globin locus control region. Nrf2 is a key player in the regulation of genes encoding for many antioxidative response enzymes. The expression of NRF2 may be induced under oxidative stress(PMID:14567983). In lung cancer, Nrf2 activation in malignant cells has been associated with tumor progression and chemotherapy resistance(PMID:20534738). Identifying patients with abnormal NRF2 expression may be important for selection for chemotherapy in NSCLC.

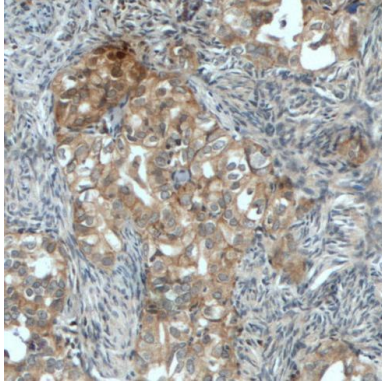
### Immunogen information

Immunogen:	nuclear factor(erythroid-derived 2)-like 2
Synonyms:	Nuclear factor erythroid 2-related factor 2 (NF-E2-related factor 2, NFE2-related factor 2, Nrf-2) HEBP1 Nuclear factor, erythroid derived 2, like 2 NFE2L2 NRF2
Observed MW:	70-100 kDa
Uniprot ID :	Q16236

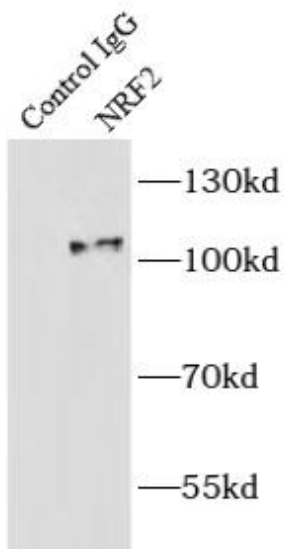
### Application

Reactivity:	Human, Mouse, Rat, Zebrafish
Tested Application:	ELISA, IP, WB, IHC, FC
Recommended dilution:	WB: 1:200-1:2000; IP: 1:200-1:1000; IHC: 1:50-1:500

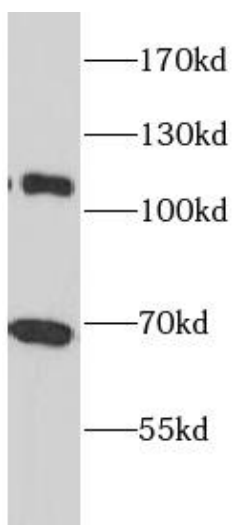
Image:



Immunohistochemistry of paraffin-embedded human ovary tumor tissue slide using FNab05855(NFE2L2 Antibody) at dilution of 1:200 heat mediated antigen retrieved with Tris-EDTA buffer(pH9).



IP Result of anti-NFE2L2 (IP: FNab05855, 3ug; Detection: FNab05855 1:300) with mouse kidney tissue lysate 4000ug.



DMSO treated HeLa cells were subjected to SDS PAGE followed by western blot with FNab05855(NFE2L2 Antibody) at dilution of 1:600