

Product Description: NT2 antibody, human, C-term.  
NTR2  
Neurotensin 2 receptor  
G Protein-coupled receptor  
Polyclonal antibody raised against the carboxy-terminus of the human NT2 receptor.

Product-No.: S13-9039-A-G

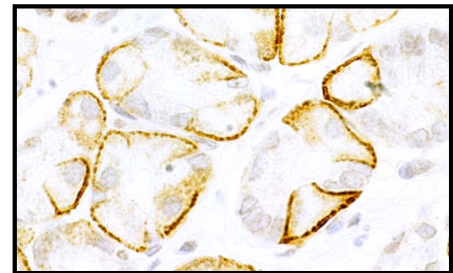
Immunogen: residues 390-410 coupled to KLH (NP\_036476)  
KLH- pqsptlmdtasgfgdppetr

Host: Rabbit

Form: IgG fraction supplied in PBS pH 7.4 containing 0.05% thimerosal as preservative  
Antibodies were purified by peptide affinity chromatography

Quantity: 50 µg

Concentration: 0.1 mg/ml



NT2 receptor immunoreactivity in a human gastric mucosa.

Applications: ICH (p), IC, W  
W = Western blot (1 µg/ml)  
IC = Immunocytochemistry (1 µg/ml)  
ICH (p) = Immunohistochemistry of formalin-fixed, paraffin-embedded tissues (2 µg/ml)

Species cross-reactivity: human

Sensitivity: 50 ng

Storage: 4 °C short term  
-20 °C long term