

**Lamin B1 rabbit pAb**  
**Cat# NB-66-06827 Size :50ul ,100ul**

**For research use only**  
**Overview**

<b>Product Name</b>	<b>Lamin B1 rabbit pAb</b>
<b>Host species</b>	Rabbit
<b>Applications</b>	WB;IHC;IF;ELISA
<b>Species Cross-Reactivity</b>	Human;Mouse;Rat
<b>Recommended dilutions</b>	Western Blot: 1/500 - 1/2000. IHC-p: 1:100-300 ELISA: 1/20000. Not yet tested in other applications.

<b>Immunogen</b>	The antiserum was produced against synthesized peptide derived from the Internal region of human LMNB1. AA range:391-440.
------------------	---

<b>Specificity</b>	Lamin B1 Polyclonal Antibody detects endogenous levels of Lamin B1 protein.
--------------------	---

<b>Formulation</b>	Liquid in PBS containing 50% glycerol, 0.5% BSA and 0.02% sodium azide.
--------------------	---

<b>Storage</b>	Store at -20°C. Avoid repeated freeze-thaw cycles.
----------------	--

<b>Protein Name</b>	Lamin-B1
---------------------	----------

<b>Gene Name</b>	LMNB1
------------------	-------

<b>Cellular localization</b>	Nucleus lamina
------------------------------	----------------

<b>Purification</b>	The antibody was affinity-purified from rabbit antiserum by affinity-chromatography using epitope-specific immunogen.
---------------------	---

<b>Clonality</b>	Polyclonal
------------------	------------

<b>Concentration</b>	1 mg/ml
----------------------	---------

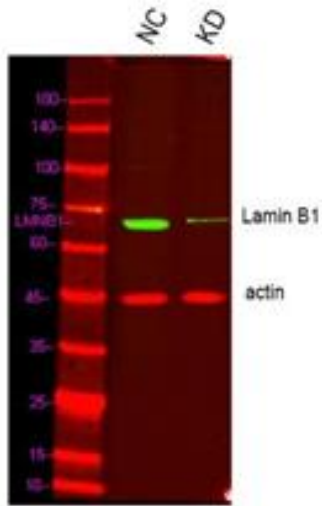
<b>Observed band</b>	70kD
----------------------	------

<b>Human Gene ID</b>	4001
----------------------	------

<b>Human Swiss-Prot Number</b>	P20700
--------------------------------	--------

<b>Alternative Names</b>	LMNB1; LMN2; LMNB; Lamin-B1 lamin B1(LMNB1) Homo sapiens This gene encodes one of the two B-type lamin proteins and is a component of the nuclear lamina. A duplication of this gene is associated with autosomal dominant adult-onset leukodystrophy (ADLD). Alternative splicing results in multiple transcript variants. [provided by RefSeq, Dec 2015]
--------------------------	--

<b>Background</b>	
-------------------	--



## Western blot analysis of lysates from

1) HeLa cells

2) HeLa cells knockdown by siRNA

(F:GCUUCUUGAUGUAAAGUUATT,

R:UAACUUUACAUCAAGAAGCTT)

(Green) primary antibody was diluted at 1:1000, 4° over night

Dylight 800 secondary antibody (Immunoway:RS23920)

For reference only