

LBP antibody

Product Information

Catalog No.:	FNab04712
Size:	100µg
Form:	liquid
Purification:	Immunogen affinity purified
Purity:	≥95% as determined by SDS-PAGE
Host:	Rabbit
Clonality:	polyclonal
Clone ID:	None
IsoType:	IgG
Storage:	PBS with 0.02% sodium azide and 50% glycerol pH 7.3, -20°C for 12 months(Avoid repeated freeze / thaw cycles.)

Background

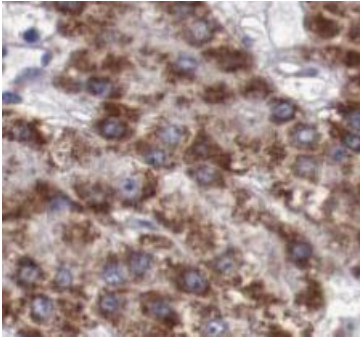
Plays a role in the innate immune response. Binds to the lipid A moiety of bacterial lipopolysaccharides(LPS), a glycolipid present in the outer membrane of all Gram-negative bacteria(PubMed:7517398, PubMed:24120359). Acts as an affinity enhancer for CD14, facilitating its association with LPS. Promotes the release of cytokines in response to bacterial lipopolysaccharide(PubMed:7517398, PubMed:24120359).

Immunogen information

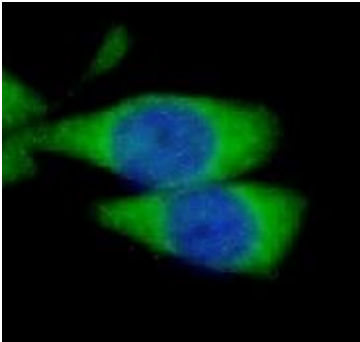
Immunogen:	lipopolysaccharide binding protein
Synonyms:	Lipopolysaccharide-binding protein (LBP) LBP
Observed MW:	66 kDa
Uniprot ID :	P18428

Application

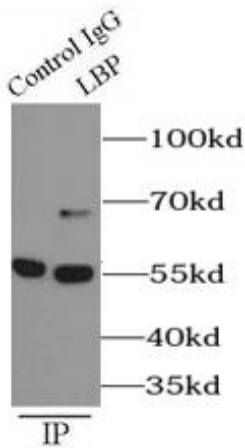
Reactivity:	Human, Mouse, Rat
Tested Application:	ELISA, WB, IHC, IF, FC, IP
Recommended dilution:	WB: 1:500-1:2000; IP: 1:500-1:2000; IHC: 1:20-1:200; IF: 1:20-1:200
Image:	



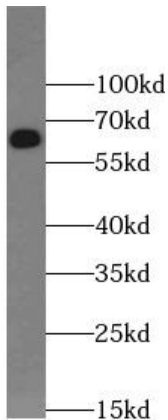
Immunohistochemistry of paraffin-embedded human liver cancer using FNab04712(LBP antibody) at dilution of 1:50



Immunofluorescent analysis of L02 cells using FNab04712 (LBP antibody) at dilution of 1:50 and Alexa Fluor 488-conjugated Goat Anti-Rabbit IgG(H+L)



IP Result of anti-LBP (IP: FNab04712, 4ug; Detection: FNab04712 1:1000) with mouse liver tissue lysate 3000ug.



mouse liver tissue were subjected to SDS PAGE followed by western blot with FNab04712(LBP antibody) at dilution of 1:1000